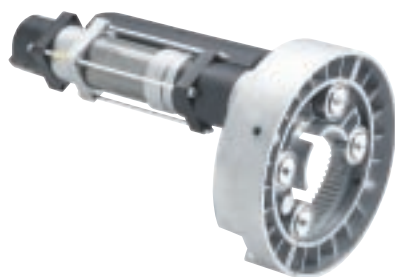


# X130 SERIES

ELECTROMECHANICAL AUTOMATION FOR BALANCED ROLL-UP DOORS



Opens the future



• **A MODEL FOR EVERY NEED.**

→ Several versions available, also with electric brake.

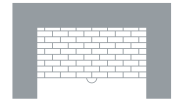
• **SMART TECHNOLOGY.**

→ Memorization of the position reached to simplify limit switch adjustment.

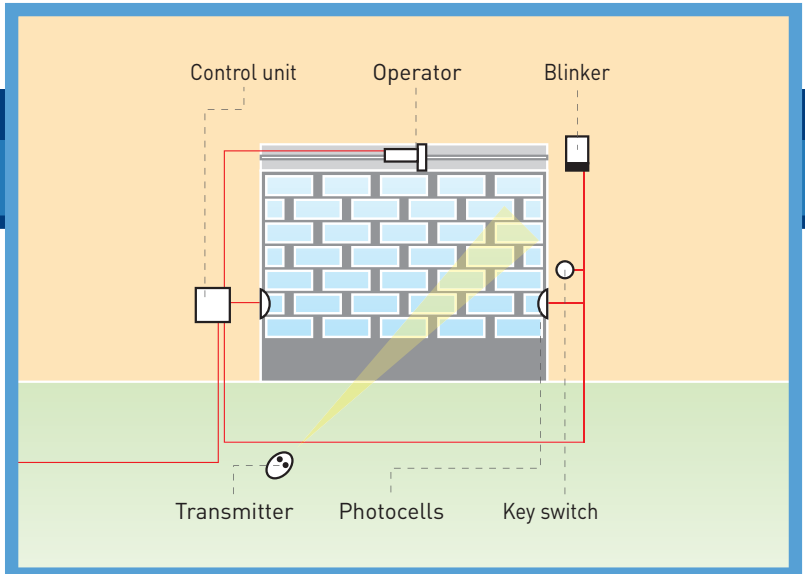
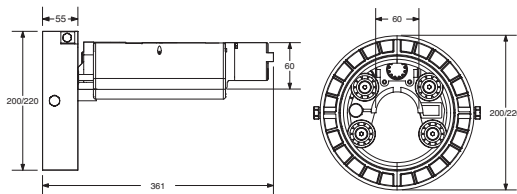
CODE	DESCRIPTION	VOLTAGE	ROLL UP DOOR	ROLL UP DOOR WEIGHT
P910024 00007	<b>X130</b>	230 V	16 m <sup>2</sup>	up to 2000N (~200 kg)
P910026 00007	<b>X130 P</b>	230 V	16 m <sup>2</sup>	up to 2200N (~220 kg)
P910025 00007	<b>X130 EF</b>	230 V	16 m <sup>2</sup>	up to 1800N (~180 kg)
P910027 00007	<b>X130 PEF</b>	230 V	16 m <sup>2</sup>	up to 2000N (~200 kg)

## TECHNICAL FEATURES

	<b>X130</b>	<b>X130 P</b>
CONTROL PANEL	ELBA (suggested)	ELBA (suggested)
REVERSIBLE/IRREVERSIBLE OPERATOR	reversible	reversible
POWER SUPPLY	230 V~ ± 10%, 50 Hz single-phase	230 V~ ± 10%, 50 Hz single-phase
ABSORBED POWER	400 W	425 W
THERMAL PROTECTION	integrated	integrated
OUTPUT TORQUE	130 Nm	130 Nm
PULLEY DIAMETER	220 mm	200 mm
SHAFT DIAMETER	60 mm (42 e 48 mm with the optional CS adapters)	60 mm (42 e 48 mm with the optional CS adapters)
TORQUE FOR REVERSIBILITY (BRAKE NOT FITTED OR RELEASED)	4 Nm	4 Nm
TYPE OF LOCK	-	-
TYPE OF LIMIT SWITCHES	electric, incorporated, adjustable	electric, incorporated, adjustable
MANUAL RELEASE	reversible	reversible
ENVIRONMENTAL CONDITIONS	from -10°C to + 50°C	from -10°C to + 50°C
DEGREE OF PROTECTION	IP20	IP20
OPERATOR WEIGHT	60 N (~6 kg)	60 N (~6 kg)
DIMENSIONS	see drawing	see drawing
	<b>X130 EF</b>	<b>X130 PEF</b>
CONTROL PANEL	ELBA (suggested)	ELBA (suggested)
REVERSIBLE/IRREVERSIBLE OPERATOR	irreversible	irreversible
POWER SUPPLY	230 V~ ± 10%, 50 Hz single-phase	230 V~ ± 10%, 50 Hz single-phase
ABSORBED POWER	410 W	425 W
THERMAL PROTECTION	integrated	integrated
OUTPUT TORQUE	130 Nm	130 Nm
PULLEY DIAMETER	220 mm	200 mm
SHAFT DIAMETER	60 mm (42 e 48 mm with the optional CS adapters)	60 mm (42 e 48 mm with the optional CS adapters)
TORQUE FOR REVERSIBILITY (BRAKE NOT FITTED OR RELEASED)	4 Nm	4 Nm
TYPE OF LOCK	electric brake	electric brake
TYPE OF LIMIT SWITCHES	electric, incorporated, adjustable	electric, incorporated, adjustable
MANUAL RELEASE	release by wire	release by wire
ENVIRONMENTAL CONDITIONS	from -10°C to + 50°C	from -10°C to + 50°C
DEGREE OF PROTECTION	IP20	IP20
OPERATOR WEIGHT	60 N (~6 kg)	60 N (~6 kg)
DIMENSIONS	see drawing	see drawing



## DIMENSIONS



## ACCESSORIES



### D113716 00002 - ELBA

- Control unit suitable for an electromechanical motor for roller shutters up to 470W. • Flexible and practical to use thanks to the multiple operating

logic • Safety ensured by the incorporated receiver managing up to 64 rolling code radio commands, separate pushbuttons. • Complete with separate inputs for the START, OPEN, CLOSE, STOP, PHOTOCELLS, WIND SENSOR and TWILIGHT sensor commands. • Easy to set using the dip switch to enable the various functions.



### D113717 00002 - ELBA BU

- Control unit with incorporated command button, suitable for an electromechanical motor for roller shutters up to 470W with command button. • Flexible

and practical to use thanks to the multiple operating logic • Safety ensured by the incorporated receiver managing up to 64 rolling code radio commands, separate pushbuttons. • Complete with separate inputs for the START, OPEN, CLOSE, STOP, PHOTOCELLS, WIND SENSOR and TWILIGHT sensor commands. • Easy to set using the dip switch to enable the various functions.



### D113252 00001 - CAPRI

- Control panel suitable for an electromechanical motor for roller shutters without receivers. • Easy use thanks to the simple functions usable.

• Safety thanks to the single wire or centralised commands and to the management of separate buttons, anemometer and twilight sensor. • Complete with operating logics in a centralised environment with multi-level master up to eight zones. • Total control of operation (step-by-step by button, zone closure from master, total control from Master 0). • Easy setting by simple dip switches for enabling the various functions. **Available while stock last.**



### D113252 00003 - CAPRI TCA

- Control panel suitable for an electromechanical motor for shutters up to 350W. • Easy use thanks to the incorporated receiver, automatic or manual 4-step logics. • Safety thanks to the built in receiver handling rolling code transmitters,

separate buttons. • Complete with separate inputs for the OPEN, CLOSE, STOP and PHOTOCCELL controls. • Total control of operation thanks to LED autodiagnosis. • Easy setting by simple dip switches for enabling the various functions. **Available while stock last.**



### D113680 00002 - ALPHA SD

- Ideal control panel for one or two motors up to 230V/0.5 HP of the sliding, swing and shutter type. • Easy wiring thanks to extractable terminals blocks. • Safety thanks to the AUTODIAGNOSIS function with LEDs for detecting faults. • Complete with integrated

two-channel receiver, pedestrian management, can manage a second snap-in receiver with advanced function. • Analogue programming for the operating parameters and digital for managing the radio system. • Easy use with previous systems thanks to total compatibility with MIZAR.



### P111376 - SCS 1

Serial connection board for QSC D MA, LIBRA C MA, LIBRA C MV, LIBRA C LX, VENERE D, LEO D MA, LEO MV, RIGEL 5 and ALTAIR P.



### P111408 - SCS WIE

Circuit board for direct connection of wiegand accessories (such as SELETTI, COMPAS SLIM, etc) to the control units QSC D MA, LIBRA C MA, LIBRA C MV, LIBRA C LX, VENERE D, LEO D MA, LEO MV, RIGEL 5 and ALTAIR P.



### N574005 - SIBOX

Empty safe for external release and control push-button panel. Dimensions: 179.5x122x92 mm.



### N733036 - MOX

External release mechanism for SIBOX model.



### N733103 00001 - POX-UP

Push-button panel with two buttons and pilot light for direct connection without control panel. To be inserted into the SIBOX model safe.



### N733103 00002 - POX-SC

Push-button panel with two buttons and pilot light for direct connection when the operator is regulated by an electrical control panel.



### N999298 00002 - EF X

Complete electric brake for X130 - X130 P.



### D211007 - CS 48

Pair of reduction half bearings for 48 mm diameter shafts.



### D211008 - CS 42

Pair of reduction half bearings for 42 mm diameter shafts.

For system composition and installation refer to the regulations in force in the country where the system is being installed. The indicated data are not binding. BFT reserves the right to make modifications without prior notice.